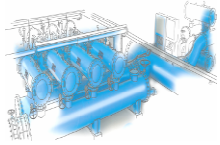


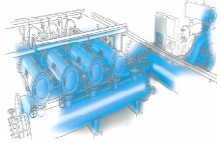
## FMA 6000 DATA SHEET

MODEL	FMA-6000
<b>GENERAL DATA</b>	
<b>FILTER HOUSING DATA</b>	
Filter housing and lids	S-235-JR carbon steel
External finish treatment	Epoxy internal coating with no solvents, external primer, intermediate and finish
Internal finish treatment	Food grade Epoxy coating
Suction nozzle	AISI-304 stainless steel
Structural rings	AISI-304 stainless steel
<b>FILTERING CROWN DATA</b>	
Frame	AISI-304 stainless steel
DOUBLE DIAMOND screen	AISI-316 stainless steel
Shaft	F-127 treated steel
Bearing	AISI-304 stainless steel
Gears	AISI-304 stainless steel
<b>TRACTION MECHANISM DATA</b>	
Frame	AISI-304 stainless steel



## FMA 6000 DATA SHEET

Drive shaft	F-127 treated steel
Bearing	Bronze
Pinion	AISI-303 stainless steel
<b>BACKWASHING VALVE DATA</b>	
Housing	GGG-40 cast steel
Disk	AISI-316 stainless steel
Coating	EPDM
Shaft	AISI-420 stainless steel



## FMA 6000 DATA SHEET

Model	Inlet / Outlet connection		Drain connection		Nominal flow m <sup>3</sup> /s			Installed Power capacity	Backwashing water consumption (L)
	DN	Inches	DN	Inches	Screen (1x1)	Screen (1,5x1,5)	Screen (2x2)		
<b>FMA - 6016</b>	400	16"	80	3"	0,089	0,13	0,17	1,48 Kw	600
<b>FMA - 6020</b>	500	20"	100	4"	0,13	0,19	0,36	1,48 Kw	1.100
<b>FMA - 6024</b>	600	24"	125	5"	0,2	0,3	0,56	1,68 Kw	2.070
<b>FMA - 6028</b>	700	28"	150	6"	0,31	0,45	0,65	1,75 Kw	2.200
<b>FMA - 6032</b>	800	32"	150	6"	0,43	0,63	0,92	1,83 Kw	2.445
<b>FMA - 6036</b>	900	36"	200	8"	0,61	0,89	1,25	2,1 Kw	3.900
<b>FMA - 6040</b>	1.000	40"	200	8"	0,78	1,14	1,53	2,57 Kw	4.200
<b>FMA - 6044</b>	1.100	44"	200	8"	0,97	1,42	1,75	2,8 Kw	4.350
<b>FMA - 6048</b>	1.200	48"	250	10"	1,16	1,69	2,22	3,35 Kw	6.100
<b>FMA - 6052</b>	1.300	52"	250	10"	1,3	1,9	2,5	3,5 Kw	7.100
<b>FMA - 6056</b>	1.400	56"	300	12"	1,61	2,35	3,33	3,7 Kw	8.800
<b>FMA - 6060</b>	1.500	60"	300	12"	1,95	2,85	3,89	4,1 Kw	9.200
<b>FMA - 6064</b>	1.600	64"	300	12"	2,33	3,4	4,17	4,3 Kw	9.600
<b>FMA - 6068</b>	1.700	68"	350	14"	2,57	3,75	4,72	4,7 Kw	10.700
<b>FMA - 6072</b>	1.800	72"	350	14"	2,83	4,14	5,14	5,2 Kw	11.450
<b>FMA - 6076</b>	1.900	76"	400	16"	3,25	4,75	5,56	5,5 Kw	13.750
<b>FMA - 6080</b>	2.000	80"	400	16"	3,7	5,41	6,67	6 Kw	14.500
<b>FMA - 6088</b>	2.200	88"	450	18"	4,42	6,45	7,78	6,2 Kw	18.300
<b>FMA - 6096</b>	2.400	96"	500	20"	5,14	7,5	8,89	6,38 Kw	20.600
<b>FMA - 6104</b>	2.600	104"	500	20"	5,75	8,39	11,1	6,72 Kw	22.100
<b>FMA - 6112</b>	2.800	112"	500	20"	6,54	9,55	13,06	7,1 Kw	22.900
<b>FMA - 6120</b>	3.000	120"	600	24"	7,1	10,3	14,44	7,25 Kw	32.000