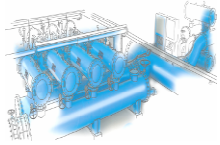


## FMA 5000 DATA SHEET

MODEL	5020	
<b>GENERAL DATA</b>		
Inlet/Outlet diameter <sup>(1)</sup>	DN-500 (20")	
Maximum/minimum working pressure	2 bar / 10 bar	
Fluid maximum temperature	50 °C (Up to 95 °C on demand)	
<b>STAINLESS STEEL SCREEN DATA</b>	<b>50 microns</b>	<b>25 microns</b>
Maximum flow rate (m <sup>3</sup> /h)	2.000	1.800
Gross filtering surface (cm <sup>2</sup> )	55.000	55.000
Net filtering surface (cm <sup>2</sup> )	51.000	51.000
Unladen weight (kg)	1.810 Kg.	
Filtration degrees	50, 25, 20, 10 microns	
<b>BACKWASHING DATA</b>		
Backwashing valve	DN-80 (3") flange	
Backwash cycle time	33 seconds	
Backwashing flow rate (m <sup>3</sup> /h)	80	
Backwashing water consumption (litres)	730	



## FMA 5000 DATA SHEET

### ELECTRICAL DATA

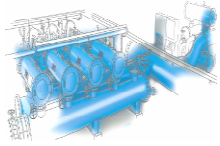
Supply voltage	220 V AC 50 Hz Single-phase (Optional 400 V AC Three-phase)
Control voltage	24 V DC
Electric motor power	0,75 kW
Electric motor consumption	3 A

### STANDARD MATERIALS

Filter housing and lids	S-235-JR carbon steel
Finish treatment	Kiln Polymerized epoxy-polyester powder coating
Suction scanner	AISI-304 stainless steel
Filtration screens	AISI-316 stainless steel
Suction nozzles	PVC with AISI 316 stainless steel ring and nylon brushes
Backwashing valves	Cast steel with polyester coating
Joints and bolts	Bichromate quality 5.6 and 5.8
Joints	NBR – EPDM - Viton

### SPECIAL MATERIALS (OPTIONAL)

Filter housing and lids	A-516 carbon steel
Finish treatment	Inside coating suitable for sea water and external coating suitable for sea environment
Suction scanner	Duplex or Superduplex stainless steel



## FMA 5000 DATA SHEET

Filtration screen	Avesta 254 SMO stainless steel
Suction nozzles	Duplex or Superduplex stainless steel and nylon brushes
Backwashing valves	Hydraulic, electric or pneumatic drive.
Joints and bolts	A2 or A4 stainless steel
Joints	Ask