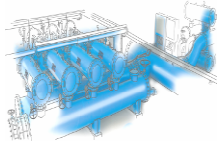


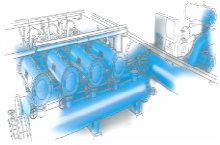
## FMA 2000 DATA SHEET

MODELO	2003	2004	2006	2008	2010	2012	2014
<b>GENERAL DATA</b>							
Inlet/Outlet diameter <sup>(1)</sup>	DN-80 (3")	DN-100 (4")	DN-150 (6")	DN-200 (8")	DN-250 (10")	DN-300 (12")	DN-350 (14")
Maximum/minimum working pressure	2 bar / 10 bar						
Fluid maximum temperature	50 °C (Up to 95 °C on demand)						
<b>PVC SCREEN DATA</b>							
Maximum flow rate (m <sup>3</sup> /h)	75	150	290	450	800	920	1.250
Gross filtering surface (cm <sup>2</sup> )	2.450	4.900	7.350	9.800	12.250	16.100	20.100
Net filtering surface (cm <sup>2</sup> )	1.600	3.200	4.800	6.400	8.000	10.300	12.800
Unladen weight (kg)	245	280	340	390	430	595	668
Filtration degrees	1.000, 500, 300, 200, 125, 100 microns						
<b>STAINLESS STEEL SCREEN DATA</b>							
Maximum flow rate (m <sup>3</sup> /h)	120	235	500	700	1.150	1.400	1.800
Gross filtering surface (cm <sup>2</sup> )	2.650	5.380	7.990	10.600	13.210	16.500	21.300
Net filtering surface (cm <sup>2</sup> )	2.200	4.390	6.900	9.400	11.900	14.700	19.150
Unladen weight (kg)	261	304	382	439	495	675	753



## FMA 2000 DATA SHEET

Filtration degree	1.000, 500, 300, 200, 125, 100, 80, 50, 25, 20 and 10 microns						
<b>BACKWASHING DATA</b>							
Backwashing valve	G-2" thread						
Backwash cycle time	25 seconds						
Backwashing flow rate (m <sup>3</sup> /h)	5	10	15	20	25	20	25
Backwashing water consumption (litres)	35	70	105	140	175	140	175
<b>ELECTRICAL DATA</b>							
Supply voltage	220 V AC 50 Hz Single-phase (Optional 400 V AC Three-phase and 12 V DC)						
Control voltage	24 V DC (12 V DC supply 12 V DC)						
Electric motor power	0,37 kW (0,25 kW if option 12 V)						
Electric motor consumption	1,4 A						
<b>STANDARD MATERIALS</b>							
Filter housing and lids	S-235-JR carbon steel						
Finish treatment	Kiln Polymerized epoxy-polyester powder coating						
Suction scanner	AISI-304 stainless steel						
Filtration screen	AISI-316 stainless steel						
Suction nozzles	PVC with AISI 316 stainless steel ring and nylon brushes						



## FMA 2000 DATA SHEET

Backwashing vavles	Brass housing with spring and stainless steel axis and polyamide lid
Joints and bolts	Bichromate quality 5.6 y 5.8
Joints	NBR – EPDM - Viton
<b>SPECIAL MATERIALS (OPTIONAL)</b>	
Filter housing and lids	A-516 carbon steel/ AISI 304 stainless steel/ AISI 316 / SuperDuplex
Finish treatment	Inside coating suitable for sea water and external coating suitable for sea environment.
Suction scanner	Duplex or Superduplex stainless steel
Filtration screen	Avesta 254 SMO stainless steel
Suction nozzles	Duplex o Superduplex stainless steel and nylon brushes
Backwashing valves	Hydraulic, electric or pneumatic drive.
Joints and bolts	A2 or A4 stainless steel
Joints	Ask